

LF206 Reactive Tree Frog

Creative Paradise Inc.

Materials used in this tutorial:

Creative Paradise, Inc [LF206 Tree Frog](#)

COE96 Frits: F1 Black, F1 Vanilla Cream, F1 Teal Green, F2 Turquoise Green, F2 Vanilla Cream and F3 Clear.

Ear Wax Vacuum, Powder Sifter, Line and dot tool.

Spray your mold with ZYP Glass Separator before using. **Wear a suitable respirator mask when using**

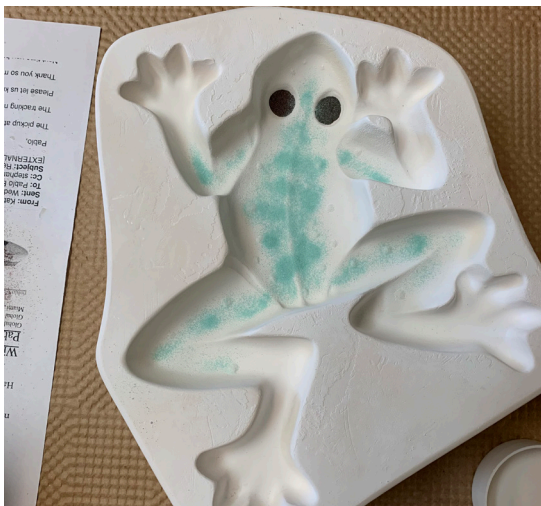
F1 Powder Frits.



Use a powder vibrate or other device to place F1 Black into the eyes of the Frog. Press the powder down into place with



Use a line and dot tool to sift and place F1 Vanilla Cream spots throughout the frog body where you want a reaction to happen. Press the powder down with your finger tip.



Use a powder sifter to sift some F1 Teal Green into the body and tops of thighs of the frog.



Place F2 Turquoise Green into the body of the frog as shown.

www.creativeparadiseglass.com

Creative Paradise Inc.



Place F2 Vanilla Cream into the body of the frog.



Place some F2 Clear into the body of the frog until the mold contains 326 grams of frit.



Place pieces of 18 gauge copper wire bent into U shapes into the clear frit, where you would like the Frog to hang. Make sure the curved side is out of the frit and leans against the mold wall (see image above). Fire the mold to a full fuse that works best in your kiln, or use our suggested schedule found in table 1.

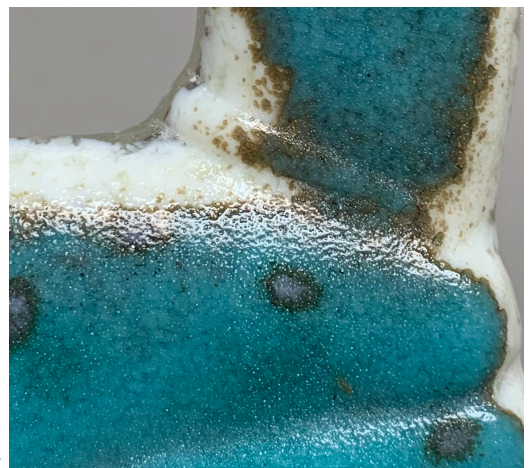
Segment	Rate	Temp	Hold
1	300	1150	45
2	150	1370	20
3	400	1455	10
4	9999	950	60
5	100	800	5

[*Before you fire in your kiln please click here to read our important firing notes.](#)



Frit Reactions

Vanilla Cream reacts to copper bearing glass, both Teal Green and Turquoise Green are copper bearing. Therefore where the Vanilla Cream touches those copper bearing colors there is a reaction.



www.creativeparadiseglass.com

Creative Paradise Inc. ★